



# PRODUCT CATALOG



# About us

---

Founded in 2018, AlphaLight Ventures Corp. is a dynamic provider of premium street lamp posts, solar lights, and roadworks supply committed to excellence in design and innovation.

Our dedication to quality and customer satisfaction sets us apart, making us a beacon in the industry since our inception.

Join us in illuminating pathways and reshaping landscapes for a brighter future.

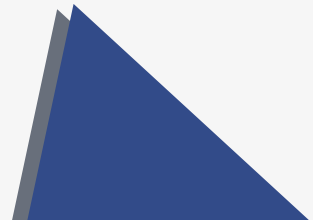




# Our **Vision**

---

We consistently exceed customer expectations through high-quality products and services. Our commitment to innovation and exceptional customer service shapes industry standards, fostering a culture of continuous improvement and delivering meaningful value to clients and stakeholders.



# Our Mission

---

We aspire to become a global leader in transforming urban lighting, setting new industry benchmarks by seamlessly blending aesthetics, functionality, and quality with our steel lamp posts, solar lights and roadworks supplies. Our vision is to create vibrant, energy-efficient communities for a brighter tomorrow.





# SOLAR LIGHTS

# AVSL-003



**we have a new way  
To change the direction  
of light**



-25°C to 65°C



4-5 nights



Waterproof IP65

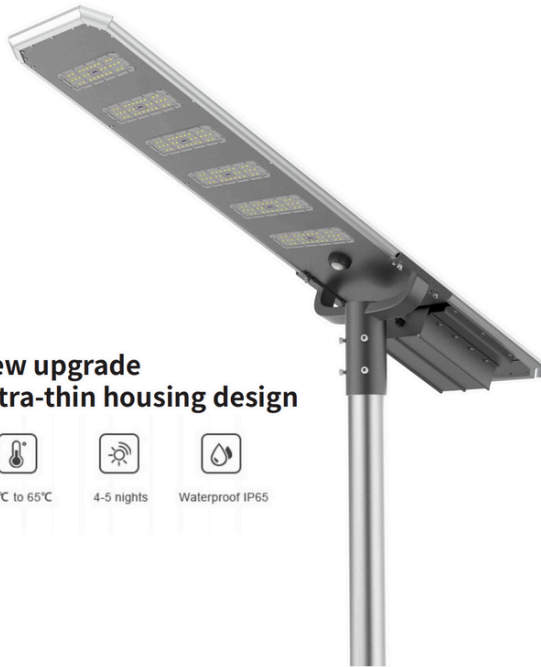


ultra thin  
30mm design



SPECS						DESCRIPTION
POWER	30W	60W	80W	100W	120W	
3030 LED chip	40PCS	80PCS	120PCS	140PCS	160PCS	
Luminous Flux	5100LM	10200LM	13600LM	17000LM	20400LM	
LiFePO4 Battery	12.8v 24AH	12.8v 36AH	12.8V 48AH	12.8V 60AH	12.8V 72AH	- 30mm ultra-thin aluminum alloy housing
Mono Solar Panel	18V 50W	18V 80W	18V 110W	18V 120W	18V 150W	- 140° wide lighting angle
Install Height	4-5M	6-7M	7-8M	8-10M	9-12M	- Easy to install and replace battery
Solar Charging Time	5 - 6 HOURS					- Night sensor + Microwave motion sensor+Remote control
Working time	12 hours per day, 3-5 rainy days					
Material	Aluminum Alloy + PMMA					
Warranty	3/5 Years					

# AVSL-004



**New upgrade  
Ultra-thin housing design**



-25°C to 65°C



4-5 nights



Waterproof IP65



SPECS						DESCRIPTION
POWER	30W	60W	80W	100W	120W	
3030 LED chip	100PCS	150PCS	200PCS	250PCS	300PCS	
Luminous Flux	5100LM	10200LM	13600LM	17000LM	20400LM	
LiFePO4 Battery	12.8v 24AH	12.8v 36AH	12.8V 48AH	12.8V 60AH	12.8V 72AH	
Mono Solar Panel	18V 50W	18V 80W	18V 110W	18V 120W	18V 150W	
Install Height	4-5M	6-7M	7-8M	8-10M	9-12M	
Solar Charging Time	5 - 6 HOURS					
Working time	12 hours per day, 3-5 rainy days					
Material	Aluminum Alloy + PMMA					
Warranty	3/5 Years					

- 30mm ultra-thin aluminum alloy housing
- 140° wide lighting angle
- Easy to install and replace battery
- Night sensor+ Microwave motion sensor+Remote control

# AVSL-005



**High Lumen  
Elegant All-in-One  
Design**



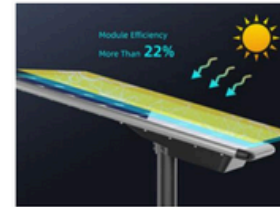
-25°C to 65°C



4-5 nights



Waterproof IP65



SPECS							DESCRIPTION
POWER	40W	50W	60W	80W	100W	120W	
3030 LED chip	96PCS	144PCS	144PCS	192PCS	288PCS	288PCS	<ul style="list-style-type: none"> <li>- Elegant All-in-One Design, Aluminum alloy case</li> <li>- Photocell Control + Microwave motion sensor</li> <li>- Control + Remote Control</li> <li>- 140° wide lighting angle, enlarged LED module</li> <li>- Support 4-5 nights lighting after full charging</li> <li>- Easy to install and Auto on/off/sensor</li> </ul>
Luminous Flux	210LM/W						
LiFePO4 Battery	12.8v 24AH	12.8v 36AH	12.8v 48AH	12.8v 60AH	12.8v 72AH	12.8v 72AH	
Mono Solar Panel	18V 60W	18V 80W	18V 110W	18V 120W	18V 140W	18V 150W	
Install Height	4-5M	6-7M	7-8M	8-10M	9-12M	9-12M	
Solar Charging Time	5 - 6 HOURS						
Working time	12 hours per day, 3-5 rainy days						
Material	Aluminum Alloy + PMMA						
Warranty	3/5 Years						



# AVSL-006



**Slim Integral Die Casting**  
**One choice more surprises**



-25°C to 65°C



4-5 nights



Waterproof IP65



SPECS					DESCRIPTION
POWER	30W	60W	90W	120W	
3030 LED chip	30PCS	60PCS	90PCS	120PCS	-Elegant integrated design, Slim aluminum alloy case  - 3030 High efficiency USA bridgelux LED chip  - 120° wide lighting angle  - Night sensor + PIR motion sensor + Remote Control
Luminous Flux	3600LM	7200LM	10800LM	14400LM	
LiFePO4 Battery	12.8V 6AH	12.8V 12AH	12.8V 18AH	12.8V 24AH	
Mono Solar Panel	18V 12W	18V 25W	18V 50W	18V 60W	
Install Height	2-3M	4-5M	4-6M	6-8M	
Solar Charging Time	5 - 6 HOURS				
Working Time	12 hours per day, 3-5 rainy days				
Material	Aluminum Alloy				
Warranty	3 Years				

# AVSL-007



SPECS							DESCRIPTION
POWER	30w	50W	60W	80W	100W	120W	
3030 LED chip	100PCS	200PCS	200PCS	200PCS	300PCS	300PCS	<ul style="list-style-type: none"> <li>- High-efficiency MPPT controller, backup 12 rainy days</li> <li>- 3030 High efficiency USA bridgelux LED chip</li> <li>- High class aluminum, anodic oxidation treatment, as new for 10 years</li> <li>- Night sensor+Microwave motion sensor+Remote control</li> </ul>
Luminous Flux	5100LM	8500LM	10200LM	13600LM	17000LM	25500LM	
LiFePO4 Battery	12.8v 24AH	12.8v 36AH	12.8v 42AH	12.8v 48AH	12.8v 60AH	12.8v 66AH	
Mono Solar Panel	18V 50W	18V 70W	18V 80W	18V 100W	18V 130W	18V 140w	
Install Height	4-6M	6-7M	7-8M	8-9M	9-10M	10-12M	
Solar Charging Time	5 - 6 HOURS						
Working Time	12 hours per day, 12 rainy days						
Material	Aluminum Alloy + PMMA						
Warranty	3 Years						

# AVSL-008



**Hot sale**  
**Suitable for various roads**



-25°C to 65°C



4-5 nights



Waterproof IP65



SPECS							DESCRIPTION
POWER	30W	60W	80W	100W	120W	150W	
3030 LED chip	60PCS	150PCS	200PCS	250PCS	300PCS	384PCS	
Luminous Flux	5100LM	10200LM	13600LM	17000LM	20400LM	25500LM	- 3030 High efficiency USA LED chip, 170LM/W
LiFePO4 Battery	12.8v 24AH	12.8v 36AH	12.8V 48AH	12.8V 60AH	12.8V 72AH	25.6V 48AH	- Elegant Integrated Design, Aluminum alloy case
Mono Solar Panel	18V 50W	18V 80W	18V 110W	18V 120W	18V 150W	18V 180w	- 140 degree adjustable bracket, suitable for various roads
Install Height	4-5M	6-7M	7-8M	8-10M	9-12M	10-12M	
Solar Charging Time	5 - 6 HOURS						
Working Time	12 hours per day, 3-5 rainy days						
Material	Aluminum Alloy + PMMA						
Warranty	3/5 Years						- The maximum wattage can reach 150 watts, specially designed for engineering

# AVSL-009



**Top Quality High Brightness  
Bifacial Solar Street light**



SPECS							DESCRIPTION
POWER	30W	60W	80W	100W	120W	150W	
3030 LED chip	120PCS	240PCS	360PCS	480PCS	600PCS	720PCS	<ul style="list-style-type: none"> <li>- High strength die-cast aluminum housing, wind resistance level 16</li> <li>- 150° wide lighting angle</li> <li>- Bifacial solar panels improve power generation efficiency by over 30%</li> <li>- Enlarged module design to achieve high light efficiency for single module</li> <li>- Multiple installation methods, 0-20° adjust angle</li> </ul>
Luminous Flux	6600LM	13200LM	17600LM	22000LM	26400LM	33000LM	
LiFePO4 Battery	12.8v 18AH	12.8v 30AH	12.8v 42AH	12.8v 54AH	12.8v 60AH	25.6V 36AH	
Mono Solar Panel	18V 60W	18V 80W	18V 100W	18V 120W	18V 150W	36V 160w	
Install Height	4-6M	6-8M	7-8M	8-10M	10-12M	10-12M	
Solar Charging Time	5 - 6 HOURS						
Working time	12 hours per day, More than 10 rainy days						
Material	Aluminum Alloy + PMMA						
Warranty	5 Years						

# AVLD-001



Standard light arm interface



High brightness lamp chips



Die cast aluminum lamp body

## PARAMETERS

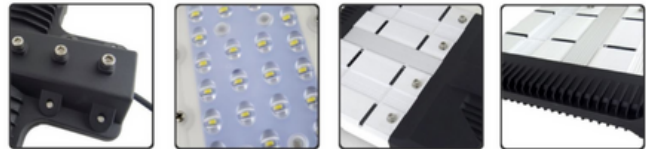
Power	Lamp Size (mm)	Carton Size (mm)	G.W.	Driver	LED	Luminous Flux	Warranty	Color Temperature	CRI	IP Rating	Input Voltage
100W	425*310*78	460*320*100	2KG	isolated driver	USA Bridgelux 3030 chips	100LM/W	3 years	2700-6500K	Ra≥80	IP66	AC85-265V
150W	505*310*78	530*320*100	3.5KG	isolated driver	USA Bridgelux 3030 chips	100LM/W	3 years	2700-6500K	Ra≥80	IP66	AC85-265V
200W	585*310*78	640*320*100	4KG	isolated driver	USA Bridgelux 3030 chips	100LM/W	3 years	2700-6500K	Ra≥80	IP66	AC85-265V
250W	660*310*78	700*320*100	5KG	isolated driver	USA Bridgelux 3030 chips	100LM/W	3 years	2700-6500K	Ra≥80	IP66	AC85-265V

# AVLD-002

## TECHNICAL PARAMETERS

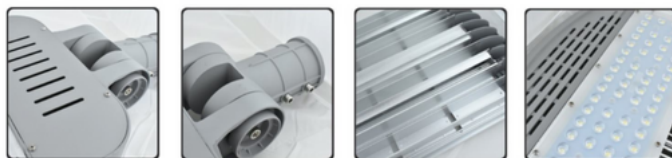


Product Power	50~350W
Input Voltage	85~265VAC
Frequency Range	50~60Hz
Power Factor	>0.95
LED chips	Bridgelux
IP Rating	IP 65/IP 66
Color Temperature	2700-6500K
Color Rendering Index	Ra > 85
Luminous Efficiency	≥ 120lm/W
Work Temperature	-20~50C
Service Life	>50000H



POWER	HEIGHT (MM)		
	HEIGHT	LENGTH	WIDTH
50W	90	373	300
100W	90	451	300
150W	90	529	300
200W	90	607	300
250W	90	685	300
300W	90	783	300
350W	90	841	300

# AVLD-003



## TECHNICAL PARAMETERS

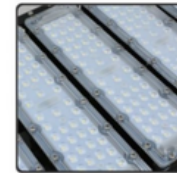
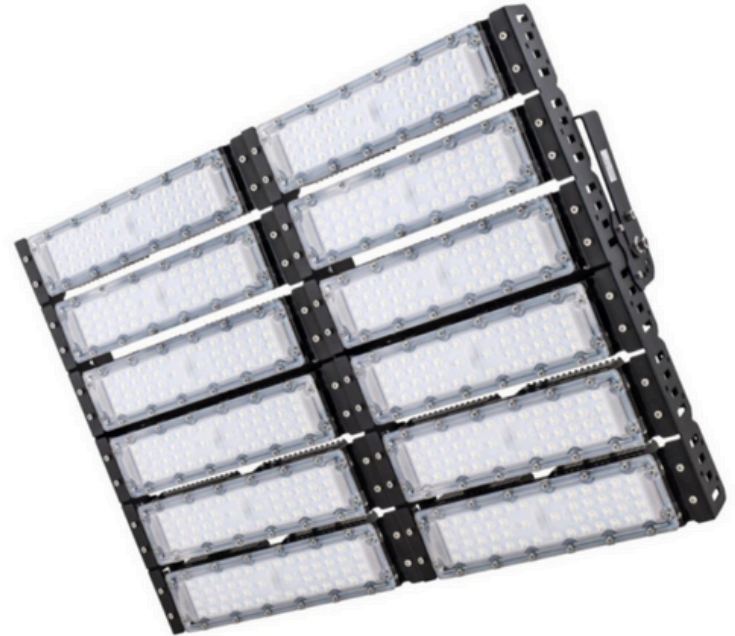
Product Power	100~300W
Input Voltage	85~265VAC
Frequency Range	50~60Hz
Power Factor	>0.95
LED chips	Bridgelux
IP Rating	IP 65/IP 66
Color Temperature	2700-6500K
Color Rendering Index	Ra > 85
Luminous Efficiency	≥ 120lm/W
Work Temperature	-20~50C
Service Life	>50000H

POWER	HEIGHT (MM)		
	HEIGHT	LENGTH	WIDTH
100W	90	451	300
150W	90	529	300
200W	90	607	300
250W	90	685	300
300W	90	783	300

# AVFL-001

## TECHNICAL PARAMETERS

Product Power	50~600W
Input Voltage	85~265VAC
Frequency Range	50~60Hz
Power Factor	>0.95
LED chips	Bridgelux
IP Rating	IP 65/IP 66
Color Temperature	2700-6500K
Color Rendering Index	Ra > 85
Luminous Efficiency	≥ 120lm/W
Work Temperature	-20~50C
Service Life	>50000H



POWER	HEIGHT (MM)		
	HEIGHT	LENGTH	WIDTH
100W	90	150	310
150W	130	230	310
200W	130	310	310
250W	130	390	310
300W	130	470	310
400W	130	625	310
500W	130	625	390
600W	130	626	620



# AVFL-002

## TECHNICAL PARAMETERS

Product Power	100~500W
Input Voltage	85~265VAC
Frequency Range	50~60Hz
Power Factor	>0.95
LED chips	Bridgelux
IP Rating	IP 65/IP 66
Color Temperature	2700-6500K
Color Rendering Index	Ra > 85
Luminous Efficiency	≥ 120lm/W
Work Temperature	-20~50C
Service Life	>50000H



POWER	HEIGHT (MM)		
	HEIGHT	LENGTH	WIDTH
100W	90	255	310
150W	90	355	310
200W	90	455	310
250W	90	555	310
300W	90	655	310
400W	90	455	620
500W	90	555	620

# AVRS-001



## DESCRIPTION

**Power supply:** Monocrystalline 2.5V/200MA

**Storage Devices:** 1.2V/600MAH High Temperature

**Working Hours:** Can work 40 hours when charge a day under standard intensity more than 72 hours of continuous work after full charge battery strong pressure resistance tempered glass static pressure is >70 tons

**Battery:** Lithium ion

**Display Mode:** Blinking/Steady Bright

**Working Life:** 4-6 years

# AVRS-002



## DESCRIPTION

**Solar Panel:** Monocrystalline 5V/140MA

**Storage Devices:** 3.2V/1500MAH Gard a life lithium battery

**Working Hours:** Can work 22 hours when charge a day under standard intensity more than 60 hours of continuous work after full charge battery.

**Display mode:** Blinking / always bright optional

**Display color:** Red, yellow, blue, green, and white

**Display devices:** 6 pcs  $\varnothing$  143mm super bright LED

**Viewing distance:** >800 meter

**Light intensity:** 400-500 Lux

**Working life:** Nickel metal hydride battery 3-5 years

**Working environment:** -20C ~ +80

**Material:** Die casting aluminum shell + reflector film + imported PC material roof, anti UV, anti yellowing, waterproof and static compressive.

**Capacity:** IP68, static pressure is greater than 60 tons product

**Packaging dimensions:** 143\*48mm

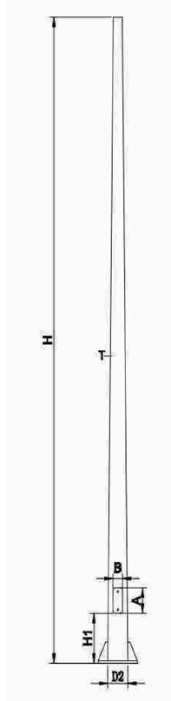
**Net weight:** 800g

**Carton size:** 143\*143\*50mm 1pc/box



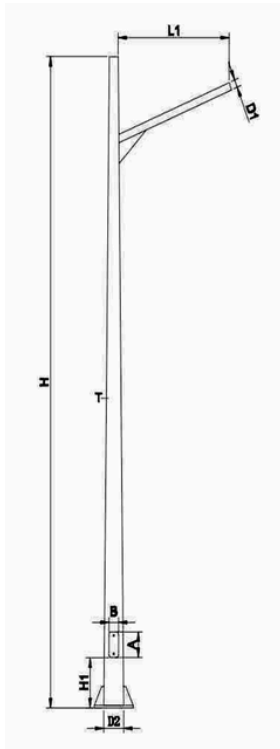
# STEEL POSTS

# AVLP-A



AVLP - A							
Conical and Octagon Light Pole							
MODEL(M)	HEIGHT(H)	TOP OD	BASE OD (D2)	THICK(T)	DOOG HEIGHT(H1)	DOOR SIZE(B*A)	BASE SIZE
AVLP-A1	4000	60mm(2.36")	140mm(5.5")	2.75mm	500mm	100*200	260*260*10
AVLP-A2	5000	60mm(2.36")	140mm(5.5")	2.75mm	500mm	100*200	260*260*10
AVLP-A3	6000	60mm(2.36")	140mm(5.5")	3mm	500mm	100*200	260*260*12
AVLP-A4	7000	70mm(2.75")	160mm(6.3")	3mm	500mm	100*200	280*280*16
AVLP-A5	8000	76mm(3.0")	177mm(7.0")	3-3.5mm	500mm	100*200	300*300*16
AVLP-A6	9000	80mm(3.15")	185mm(7.3")	3-3.5mm	500mm	100*300	350*350*18
AVLP-A7	10000	90mm(3.54")	200mm(8.0")	3.5-4mm	500mm	100*300	400*400*20
AVLP-A8	11000	90mm(3.54")	205mm(8.1")	3.75-4mm	500mm	100*300	400*400*20
AVLP-A9	12000	100mm(4.0")	220mm(8.6")	4-5mm	500mm	100*300	400*400*20

# AVLP-B

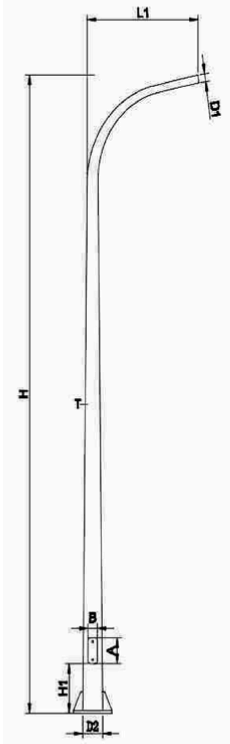


## AVLP - B

### Single-Arm Light Pole

MODEL(M)	HEIGHT(H)	TOP OD	BASE OD (D2)	THICK(T)	DOOG HEIGHT(H1)	DOOR SIZE(B*A)	BASE SIZE	ARM(L1)	OD(D1)
AVLP-B1	5000	60mm(2.36")	140mm(5.5")	2.75mm	500mm	100*200	260*260*10	1000mm	60
AVLP-B2	6000	60mm(2.36")	140mm(5.5")	3mm	500mm	100*200	260*260*12	1200mm	60
AVLP-B3	7000	70mm(2.75")	160mm(6.3")	3mm	500mm	100*200	280*280*16	1200mm	60
AVLP-B4	8000	76mm(3.0")	177mm(7.0")	3-3.5mm	500mm	100*200	300*300*16	1500mm	60
AVLP-B5	9000	80mm(3.15")	185mm(7.3")	3-3.5mm	500mm	100*300	350*350*18	1500mm	60
AVLP-B6	10000	90mm(3.54")	200mm(8.0")	3.5-4mm	500mm	100*300	400*400*20	1500mm	60
AVLP-B7	11000	90mm(3.54")	205mm(8.1")	3.75-4mm	500mm	100*300	400*400*20	1500mm	60
AVLP-B8	12000	100mm(4.0")	220mm(8.6")	4-5mm	500mm	100*300	400*400*20	2000mm	60

# AVLP-C

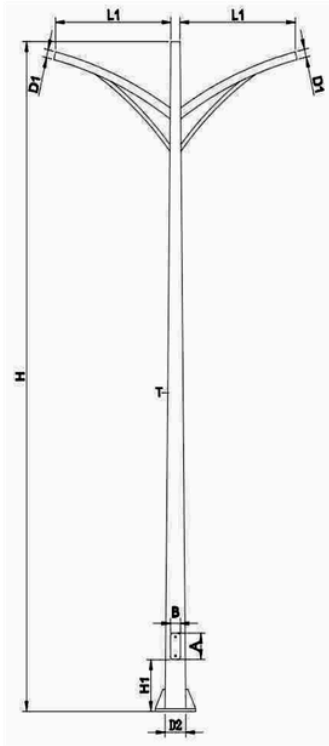


## AVLP - C

### Curve-Arm Light Pole

MODEL(M)	HEIGHT(H)	TOP OD	BASE OD (D2)	THICK(T)	DOOG HEIGHT(H1)	DOOR SIZE(B*A)	BASE SIZE	ARM(L1)	OD(D1)
AVLP-C1	5000	60mm(2.36")	140mm(5.5")	2.75mm	500mm	100*200	260*260*10	1000mm	60
AVLP-C2	6000	60mm(2.36")	140mm(5.5")	3mm	500mm	100*200	260*260*12	1200mm	60
AVLP-C3	7000	60mm(2.36")	165mm(6.5")	3mm	500mm	100*200	280*280*16	1200mm	60
AVLP-C4	8000	60mm(2.36")	165mm(6.5")	3-3.5mm	500mm	100*200	300*300*16	1500mm	60
AVLP-C5	9000	60mm(2.36")	190mm(7.55")	3-3.5mm	500mm	100*300	350*350*18	1500mm	60
AVLP-C6	10000	60mm(2.36")	200mm(8.0")	3.5-4mm	500mm	100*300	400*400*20	1500mm	60
AVLP-C7	11000	60mm(2.36")	200mm(8.07")	3.75-4mm	500mm	100*300	400*400*20	1500mm	60
AVLP-C8	12000	60mm(2.36")	225mm(8.85")	4-5mm	500mm	100*300	400*400*20	1500mm	60

# AVLP-D



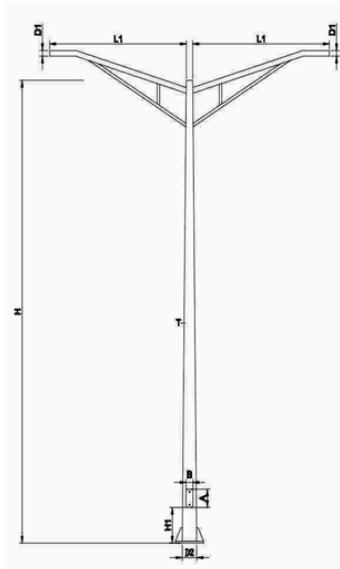
## AVLP - D

### Double-Arm Light Pole

MODEL(M)	HEIGHT(H)	TOP OD	BASE OD (D2)	THICK(T)	DOOG HEIGHT(H1)	DOOR SIZE(B*A)	BASE SIZE	ARM(L1)	OD(D1)
AVLP-D1	5000	60mm(2.36")	140mm(5.5")	2.75mm	500mm	100*200	260*260*10	1000mm	60
AVLP-D2	6000	60mm(2.36")	140mm(5.5")	3mm	500mm	100*200	260*260*12	1200mm	60
AVLP-D3	7000	70mm(2.75")	160mm(6.3")	3mm	500mm	100*200	280*280*16	1200mm	60
AVLP-D4	8000	76mm(3.0")	177mm(7.0")	3-3.5mm	500mm	100*200	300*300*16	1500mm	60
AVLP-D5	9000	80mm(3.15")	185mm(7.3")	3-3.5mm	500mm	100*300	350*350*18	1500mm	60
AVLP-D6	10000	90mm(3.54")	200mm(8.0")	3.5-4mm	500mm	100*300	400*400*20	1500mm	60
AVLP-D7	11000	90mm(3.54")	205mm(8.1")	3.75-4mm	500mm	100*300	400*400*20	1500mm	60
AVLP-D8	12000	100mm(4.0")	220mm(8.6")	4-5mm	500mm	100*300	400*400*20	2000mm	60



# AVLP-E

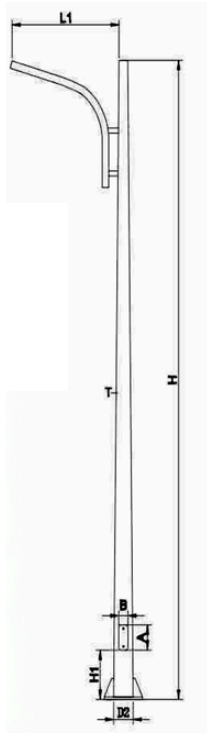


## AVLP - E

### Fishtail-Arm Light Pole

MODEL(M)	HEIGHT(H)	TOP OD	BASE OD (D2)	THICK(T)	DOOG HEIGHT(H1)	DOOR SIZE(B*A)	BASE SIZE	ARM(L1)	OD(D1)
AVLP-E1	5000	60mm(2.36")	140mm(5.5")	2.75mm	500mm	100*200	260*260*10	1000mm	60
AVLP-E2	6000	60mm(2.36")	140mm(5.5")	3mm	500mm	100*200	260*260*12	1200mm	60
AVLP-E3	7000	70mm(2.75")	160mm(6.3")	3mm	500mm	100*200	300*300*16	1200mm	60
AVLP-E4	8000	76mm(3.0")	177mm(7.0")	3-3.5mm	500mm	100*200	300*300*16	1500mm	60
AVLP-E5	9000	80mm(3.15")	185mm(7.3")	3-3.5mm	500mm	100*300	350*350*18	1500mm	60
AVLP-E6	10000	90mm(3.54")	200mm(8.0")	3.5-4mm	500mm	100*300	400*400*20	1500mm	60
AVLP-E7	11000	90mm(3.54")	205mm(8.1")	3.75-4mm	500mm	100*300	400*400*20	1500mm	60
AVLP-E8	12000	100mm(4.0")	220mm(8.6")	4-5mm	500mm	100*300	400*400*20	2000mm	60

# AVLP-F

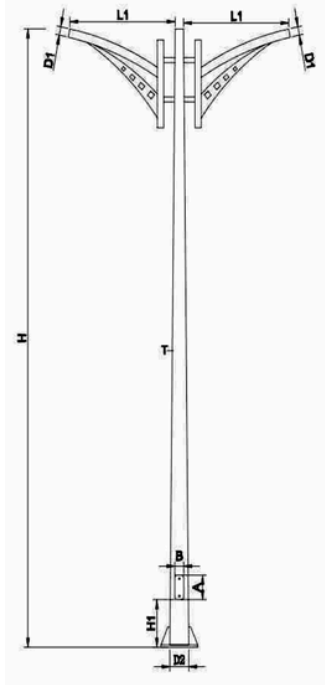


## AVLP - G

### Sickle-Arm Light Pole

MODEL(M)	HEIGHT(H)	TOP OD	BASE OD (D2)	THICK(T)	DOOG HEIGHT(H1)	DOOR SIZE(B*A)	BASE SIZE	ARM(L1)	OD(D1)
AVLP-G1	5000	60mm(2.36")	140mm(5.5")	2.75mm	500mm	100*200	260*260*10	1000mm	60
AVLP-G2	6000	60mm(2.36")	140mm(5.5")	3mm	500mm	100*200	260*260*12	1200mm	60
AVLP-G3	7000	70mm(2.75")	160mm(6.3")	3mm	500mm	100*200	280*280*16	1200mm	60
AVLP-G4	8000	76mm(3.0")	177mm(7.0")	3-3.5mm	500mm	100*200	300*300*16	1500mm	60
AVLP-G5	9000	80mm(3.15")	185mm(7.3")	3-3.5mm	500mm	100*300	350*350*18	1500mm	60
AVLP-G6	10000	90mm(3.54")	200mm(8.0")	3.5-4mm	500mm	100*300	400*400*20	1500mm	60
AVLP-G7	11000	90mm(3.54")	205mm(8.1")	3.75-4mm	500mm	100*300	400*400*20	1500mm	60
AVLP-G8	12000	100mm(4.0")	220mm(8.6")	4-5mm	500mm	100*300	400*400*20	2000mm	60

# AVLP-G

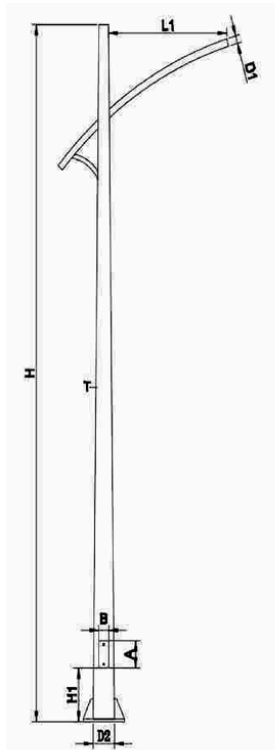


## AVLP - H

### Decorative Double-Arm Light Pole

MODEL(M)	HEIGHT(H)	TOP OD	BASE OD (D2)	THICK(T)	DOOG HEIGHT(H1)	DOOR SIZE(B*A)	BASE SIZE	ARM(L1)	OD(D1)
AVLP-H1	5000	60mm(2.36")	140mm(5.5")	2.75mm	500mm	100*200	260*260*10	1000mm	60
AVLP-H2	6000	60mm(2.36")	140mm(5.5")	3mm	500mm	100*200	260*260*12	1200mm	60
AVLP-H3	7000	70mm(2.75")	160mm(6.3")	3mm	500mm	100*200	300*300*16	1200mm	60
AVLP-H4	8000	76mm(3.0")	177mm(7.0")	3-3.5mm	500mm	100*200	300*300*16	1500mm	60
AVLP-H5	9000	80mm(3.15")	185mm(7.3")	3-3.5mm	500mm	100*300	350*350*18	1500mm	60
AVLP-H6	10000	90mm(3.54")	200mm(8.0")	3.5-4mm	500mm	100*300	400*400*20	1500mm	60
AVLP-H7	11000	90mm(3.54")	205mm(8.1")	3.75-4mm	500mm	100*300	400*400*20	1500mm	60
AVLP-H8	12000	100mm(4.0")	220mm(8.6")	4-5mm	500mm	100*300	400*400*20	2000mm	60

# AVLP-H

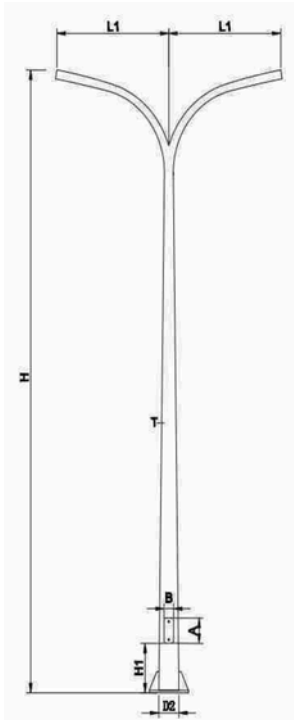


## AVLP - I

### Arrow-Arm Light Pole

MODEL(M)	HEIGHT(H)	TOP OD	BASE OD (D2)	THICK(T)	DOOG HEIGHT(H1)	DOOR SIZE(B*A)	BASE SIZE	ARM(L1)	OD(D1)
AVLP-I1	5000	60mm(2.36")	140mm(5.5")	2.75mm	500mm	100*200	260*260*10	1000mm	60
AVLP-I2	6000	60mm(2.36")	140mm(5.5")	3mm	500mm	100*200	260*260*12	1200mm	60
AVLP-I3	7000	70mm(2.75")	160mm(6.3")	3mm	500mm	100*200	280*280*16	1200mm	60
AVLP-I4	8000	76mm(3.0")	177mm(7.0")	3-3.5mm	500mm	100*200	300*300*16	1500mm	60
AVLP-I5	9000	80mm(3.15")	185mm(7.3")	3-3.5mm	500mm	100*300	350*350*18	1500mm	60
AVLP-I6	10000	90mm(3.54")	200mm(8.0")	3.5-4mm	500mm	100*300	400*400*20	1500mm	60
AVLP-I7	11000	90mm(3.54")	205mm(8.1")	3.75-4mm	500mm	100*300	400*400*20	1500mm	60
AVLP-I8	12000	100mm(4.0")	220mm(8.6")	4-5mm	500mm	100*300	400*400*20	2000mm	60

# AVLP-I

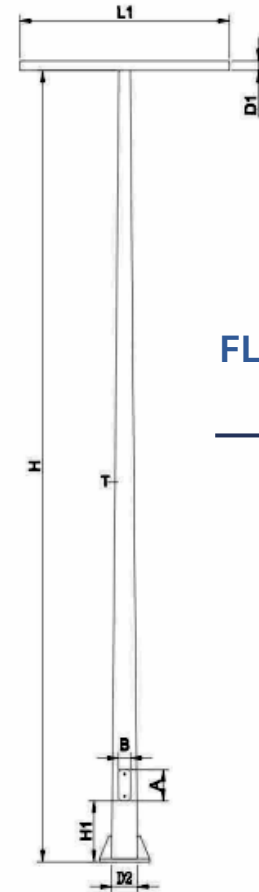


## AVLP - P

### Double Curved-Arm Light Pole

MODEL(M)	HEIGHT(H)	TOP OD	BASE OD (D2)	THICK(T)	DOOG HEIGHT(H1)	DOOR SIZE(B*A)	BASE SIZE	ARM(L1)	OD(D1)
AVLP-P1	5000	60mm(2.36")	140mm(5.5")	2.75mm	500mm	100*200	260*260*10	1000mm	60
AVLP-P2	6000	60mm(2.36")	140mm(5.5")	3mm	500mm	100*200	260*260*12	1200mm	60
AVLP-P3	7000	60mm(2.36")	165mm(6.5")	3mm	500mm	100*200	300*300*16	1200mm	60
AVLP-P4	8000	60mm(2.36")	165mm(6.5")	3-3.5mm	500mm	100*200	300*300*16	1500mm	60
AVLP-P5	9000	60mm(2.36")	190mm(7.55")	3-3.5mm	500mm	100*300	350*350*18	1500mm	60
AVLP-P6	10000	60mm(2.36")	200mm(8.0")	3.5-4mm	500mm	100*300	400*400*20	1500mm	60
AVLP-P7	11000	60mm(2.36")	200mm(8.0")	3.75-4mm	500mm	100*300	400*400*20	1500mm	60
AVLP-P8	12000	60mm(2.36")	225mm(8.85")	4-5mm	500mm	100*300	400*400*20	1500mm	60

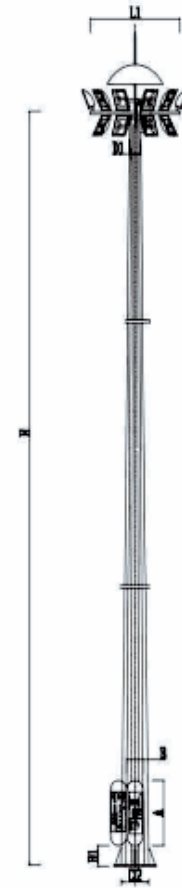
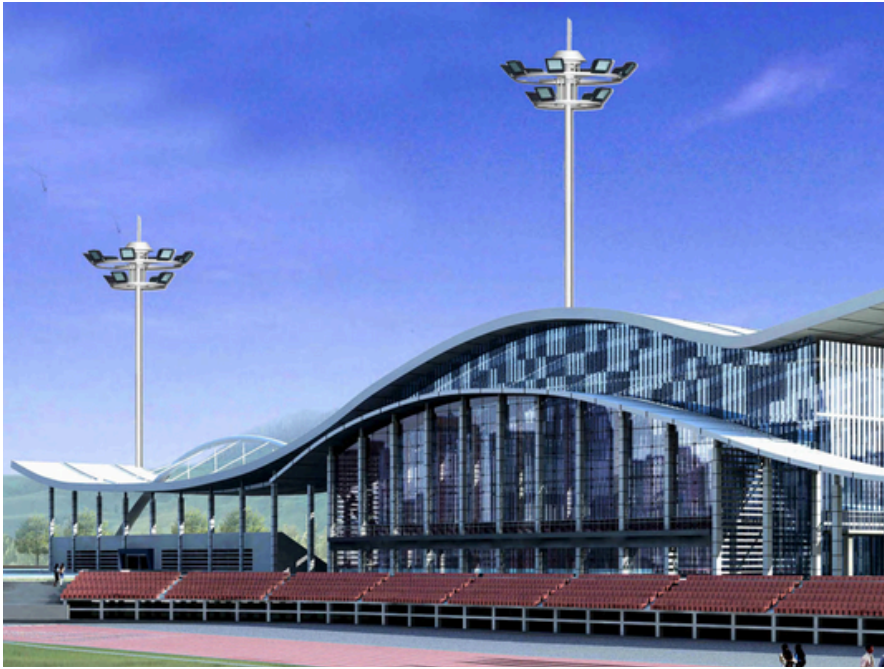
# AVFL



**FLOODLIGHT  
POLE**

AVFL									
MODEL (M)	HEIGHT (H)	TOP OD	BASE OD (D2)	THICK (T)	DOOG HEIGHT (H1)	DOOR SIZE (B*A)	BASE SIZE	ARM (L1)	OD (D1)
AVFL-1	8000	80mm (3.15")	185mm (3.15")	3-3.5mm	500mm	100*300	350*350*18	1200	40*80
AVFL-2	10000	90mm (3.54")	250mm (3.15")	3.75-4mm	500mm	100*300	400*400*20	1500	60
AVFL-3	12000	100mm (4.0")	220mm (3.15")	4-5mm	500mm	100*300	400*400*20	2000	60
AVFL-4	15000	110mm (4.3")	280mm (3.15")	5mm	500mm	100*200	500*20	2000	60
AVFL-5	18000	120mm (4.72")	350mm (3.15")	5mm-6mm	500mm	100*300	550*20	2000	60

# AVFL



**HIGH MAST  
LIGHT POLE**

AVFL									
MODEL (M)	HEIGHT (H)	TOP OD	BASE OD (O2)	THICK (T)	DOOG HEIGHT (H1)	DOOR SIZE (B*A)	BASE SIZE	ARM (L1)	OD (D1)
AVHM-1	18000	230mm (3.15")	450mm (7.3")	6mm/6mm	500mm	1100*300	750*20mm	1500	40*60
AVHM-2	20000	230mm (3.54")	450mm (8.1")	6mm/6mm	500mm	1100*300	900*20mm	2000	40*60
AVHM-3	25000	240mm (4.0")	530mm (8.6")	6mm/6mm/8mm	500mm	1100*300	900*25mm	2000	40*60
AVHM-4	30000	250mm (4.3")	550mm (11.0")	6mm/8mm/10mm	500mm	1100*300	1000*30mm	2500	40*60
AVHM-5	35000	260mm (4.72")	260mm (13.7")	6mm/8mm/8mm/10mm	500mm	1100*300	1000*30mm	2500	40*60



## ALPHALIGHT VENTURES CORPORATION

*Forging Brilliance, Illuminating Tomorrow*



0992-0513-711 / 0915-1331-544



[alphalightventurescorp@gmail.com](mailto:alphalightventurescorp@gmail.com)



**Office:** #405 L&R Bldg. Verdana Village Center, Molino IV Daang Hari Bacoor, Cavite

**Warehouse:** 270 Real St. Talon II, Alabang-Zapote Rd., Las Piñas City